



Mark Davidson Sales Agencies

☎ 07813 088 330

✉ [markdavidsonagencies@gmail.com](mailto:markdavidsonagencies@gmail.com)

*Vintage*  
sofa company

fast track

beautiful furniture, delivered from stock



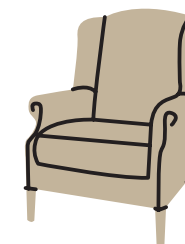


Banquet Large  
Buttoned Footstool

XXLBANSQ w:140 x d:140 x h:36  
(Not in the Fast Track Range)

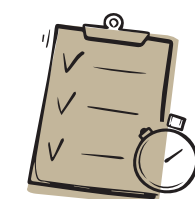
# fast track

all you need to know...



## What is Fast Track?

Fast Track means that we have it in stock and ready to go so instead of waiting for a custom, made to order piece to go through the manufacturing process you're ordering something with much shorter lead times. These items are created in our most popular shapes and colours so we know we have something you're going to love and everything we produce within this range still has our usual high quality and amazing finishes.



## How about delivery times?

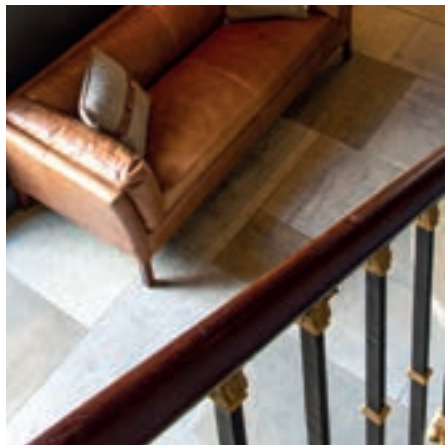
Delivery times are dependent on the item you are ordering. We endeavour to hold our complete collection in stock for immediate dispatch to your retailer. Fast track items should be in stock and therefore we are able to offer these on shorter lead times. For bespoke pieces there are longer lead times for manufacture and delivery but we can advise you of these when you order.







## Can I order bespoke items?

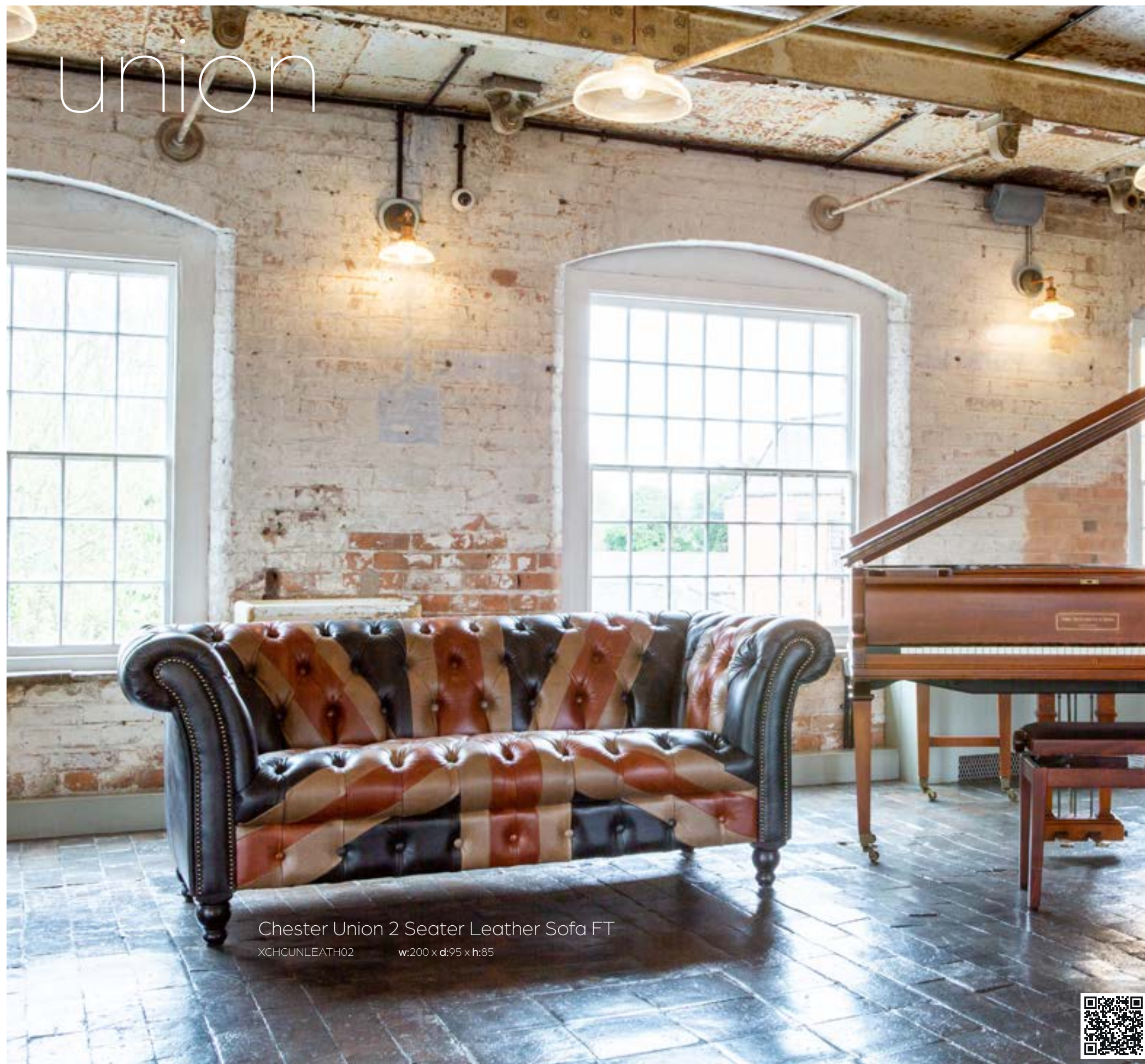
We can customise many of the shapes and designs that we already have. We have an extensive range of fabrics and leathers in many different articles and finishes that allow you to customise your individual piece of furniture to your taste, wood finishing options can also be selected, for custom bespoke orders design and development of each piece is a longer process.





06-07 union	08-13 Patchwork	 14-15 Lowland Thistle
 16-17 Sterling Cragg	 18-23 Hunting Lodge	 24-27 Moreland
28-29 Fabric	30-33 Leather	34-35 Sustainability





Chester Union 2 Seater Leather Sofa FT  
XHCUNLEATH02 w:200 x d:95 x h:85



Crompton Satire Chair  
XCROMSAL w:100 x d:102 x h:95

Chester Saltire 2 seater  
XCHCSALTIRE02 w:235 x d:95 x h:85



Available to order



Crompton Union Chair  
XCROMUNI w:100 x d:102 x h:95



Halequin Patchwork FT

PATCHCHESTER    w:200 x d:95 x h:85  
CHCPATCHHARL    w:200 x d:95 x h:85  
Original specification (limited stocks)



Updated Design

Rutland Halequin 2 Seater FT

PATRUTLAND02    w:186 x d:87 x h:77



patchwork



Prestbury Patchwork FT

PRESPATCH    w:200 x d:95 x h:85



Chester Chaise FT

XCHAISEPT    w:165 x d:65 x h:85

Bolster Cushion Included



Halequin Patchwork FT



Rutland 2 Seater FT





Gotham Harlequin Chair FT

PATCHGOTH w:80 x d:92 x h:98

CHCGOTHHARL w:80 x d:92 x h:98  
(Original specification (limited stocks))



Gibson Circular  
Lamp Table

GIB16 w:50 x d:50 x h:60  
(Not in the Fast Track Range)



Campaign Desk

WM73 w:100 x d:35 x h:100  
(Not in the Fast Track Range)



Burford Harlequin Chair FT

PATCHBURFORD w:75 x d:100 x h:93



patchwork



Alderley Leather Patchwork FT  
ALDERPATCH      w:80 x d:92 x h:98



Barnard Patchwork Chair FT  
XBARN1      w:80 x d:81 x h:101



patchwork

Barnard Patchwork Chair FT



Gibson  
Nest of Tables  
GIB12  
w:37.5 x d:70 x h:61  
(Not in the  
Fast Track Range)

Patchwork Rug  
PATRUG05      w:120 x d:170 x h:0.5  
(Not in the Fast Track Range)

Left to right  
Barnard Patchwork Chair FT  
Halequin Patchwork FT







### Lowther FT

XLOWTH02 - 2 Seater    w:188 x d:95 x h:95  
XLOWTH03 - 3 Seater    w:219 x d:95 x h:95



### Whinfell FT

XWHIN01 - Chair    w:92 x d:99 x h:94  
XWHIN02 - 2 Seater    w:182 x d:99 x h:94  
XWHIN03 - 3 Seater    w:213 x d:99 x h:94





sterling  
cragg



#### Creswell FT

XCRES2 - 2 Seater

w:175 x d:95 x h:105

XCRES3 - 3 Seater

w:210 x d:95 x h:105



#### Morpeth FT

XMORP2 - 2 Seater

w:175 x d:95 x h:105

XMORP3 - 3 Seater

w:210 x d:95 x h:105

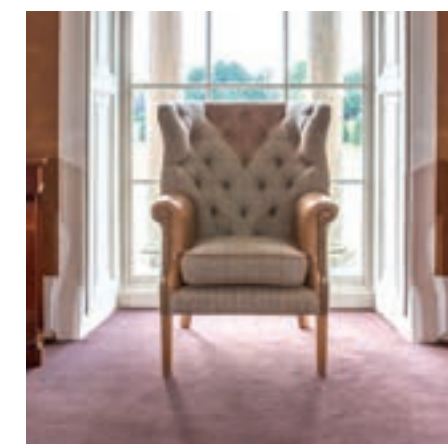
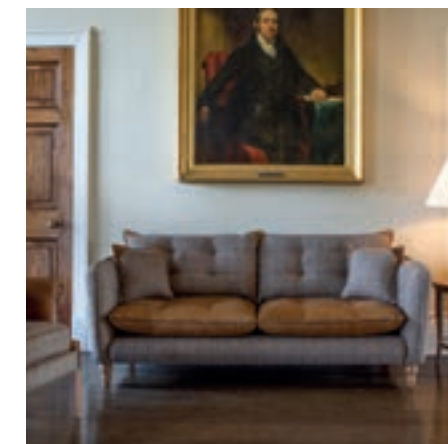




Manor Range  
Coffee Table / TV Unit  
WM13      w:130 x d:65 x h:50  
(Not in the Fast Track Range)



hunting lodge





Brunswick FT

XBRUNS2 – 2 Seat Sofa      w:175 x d:90 x h:75  
XBRUNS3 – 3 Seat Sofa      w:215 x d:90 x h:75



2 patchwork cushions included

Burlington FT

BURL2 – 2 Seater      w:180 x d:95 x h:95  
BURL3 – 3 Seater      w:215 x d:95 x h:95



Scatter Cushions included

Regent FT

XREGT2 – 2 Seater      w:175 x d:90 x h:75  
XREGT3 – 3 Seater      w:217 x d:90 x h:75



Scatter Cushions included

Malone FT (Harris Tweed Hunting Lodge and Brown Tan Leather)

XMLHTW02\_PL – 2 Seater      w:152 x d:84 x h:84  
XMLHTW03\_PL – 3 Seater      w:182 x d:84 x h:84



p28 for more from our Malone range



Chester Lodge 2 Seater FT

XCHL02 – 2 Seater      w:200 x d:95 x h:85  
XCHL03 – 3 Seater      w:235 x d:95 x h:85



Milford FT

XMIL02 – 2 Seater      w:186 x d:87 x h:77  
XMIL03 – 3 Seater      w:213 x d:87 x h:77



Hexham FT

XHEX2 – 2 Seater      w:155 x d:81 x h:101



Hexham FT

XHEX1      w:80 x d:81 x h:101



Ellis 2 Seater FT

XELLIS02

w:135 x d:84 x h:85



Ellis FT

XELLIS01

w:75 x d:84 x h:85



hunting lodge

Manor Range  
Nest of 2 Tables

WM10

w:440 x d:440 x h:420

(Not in the Fast Track Range)



Buckingham FT

XBUCK01

w:88 x d:88 x h:114



Kew FT

XKEW01

w:83 x d:90 x h:105



Elston FT

XELSON

w:61 x d:72 x h:80



Fluted Wing Armchair FT

XFLUWNG

w:83 x d:90 x h:105



Winchester FT

XWCH01

w:88 x d:88 x h:114



Lily FT

XLILYPET

w:75 x d:86 x h:85



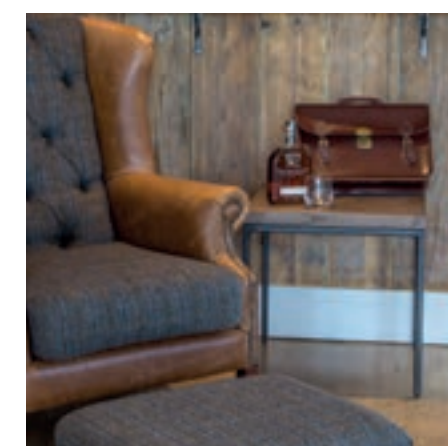
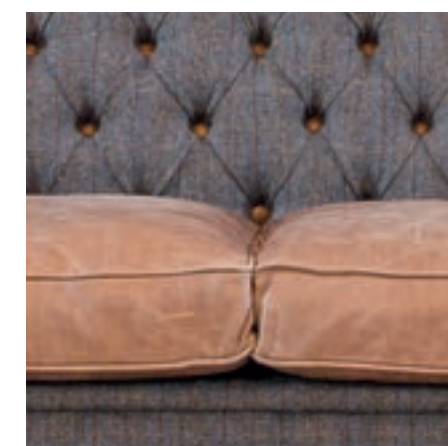




moreland

Mini Buttoned Pull Out Stool

KENSTL w:56 x d:56 x h:25  
(Not in the Fast Track Range)





Granby FT

XGRA02 – 2 Seater Sofa      w:186 x d:87 x h:77  
XGRA03 – 3 Seater Sofa      w:213 x d:87 x h:77



Granby FT

XGRA01      w:100 x d:87 x h:77



Kensington FT

XKEN01      w:88 x d:88 x h:114



Stanford FT

XSTAN01      w:68 x d:76 x h:88



Chester Club FT

XCHC02 – 2 Seater      w:200 x d:95 x h:85  
XCHC03 – 3 Seater      w:235 x d:95 x h:85



Chester Club FT

XCHC01      w:127 x d:95 x h:85



Wing FT

XWNG1      w:83 x d:90 x h:105



Mini Pull Out Stool

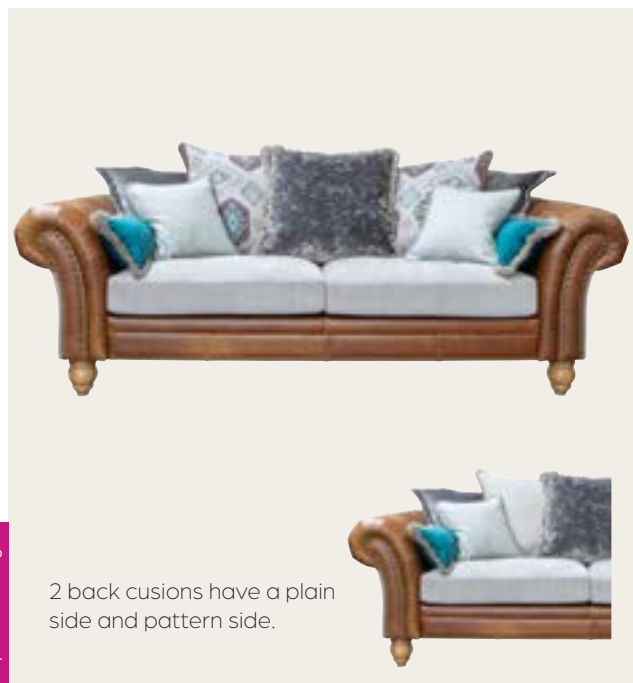
KENSTP      w:42 x d:56 x h:25  
(Not in the Fast Track Range)



# Boutique fabrics & leather



With luxury feather and foam filled cushions



2 back cushions have a plain side and pattern side.

Updated Design

Brompton FT - (New Design)

XBROMAN03 - 3 Seater

w:230 x d:105 x h:100

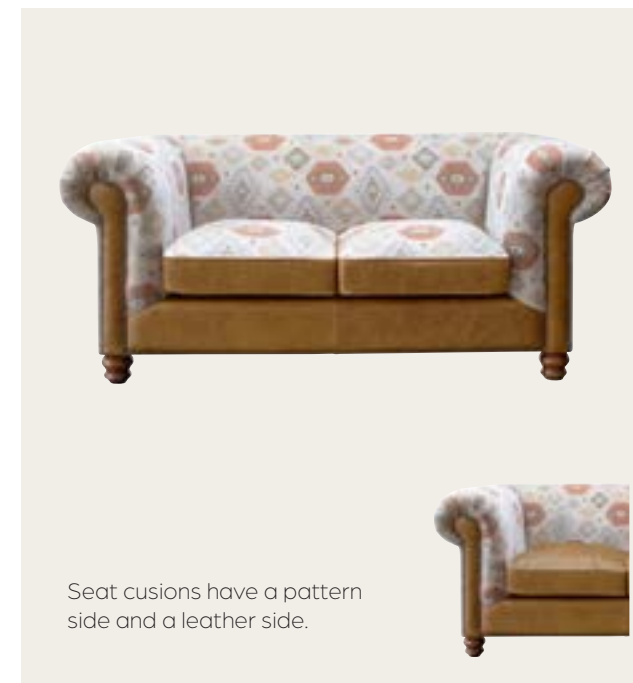


Available to order

Brompton - Cushion Back

XBROMAN03 - 3 Seater

w:230 x d:105 x h:100



Seat cushions have a pattern side and a leather side.

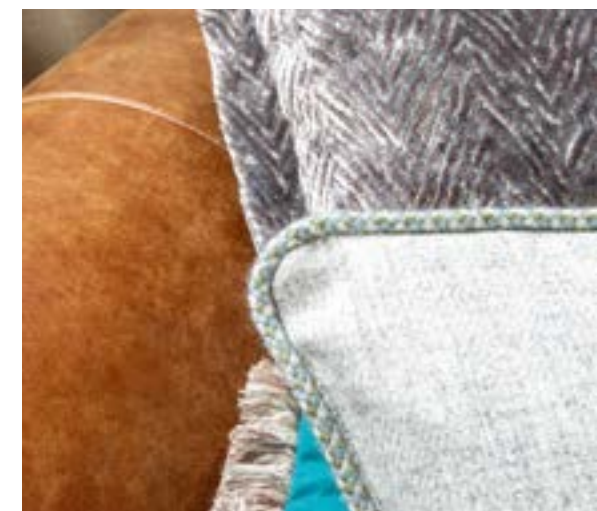
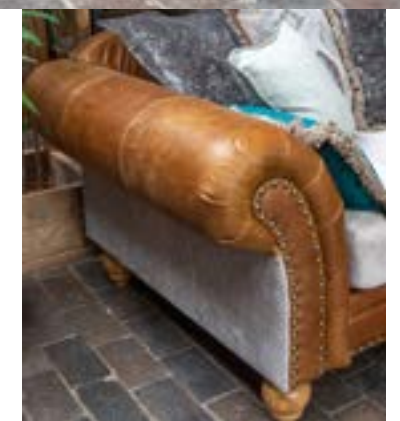
Capone FT

XCAPONE02 - 2 Seater

w:181 x d:98 x h:80

XCAPONE03 - 3 Seater

w:220 x d:98 x h:80







leather

Gotti Club FT – (Espresso Leather)  
XGTIEL03\_DL – 3 Seater w:220 x d:98 x h:80





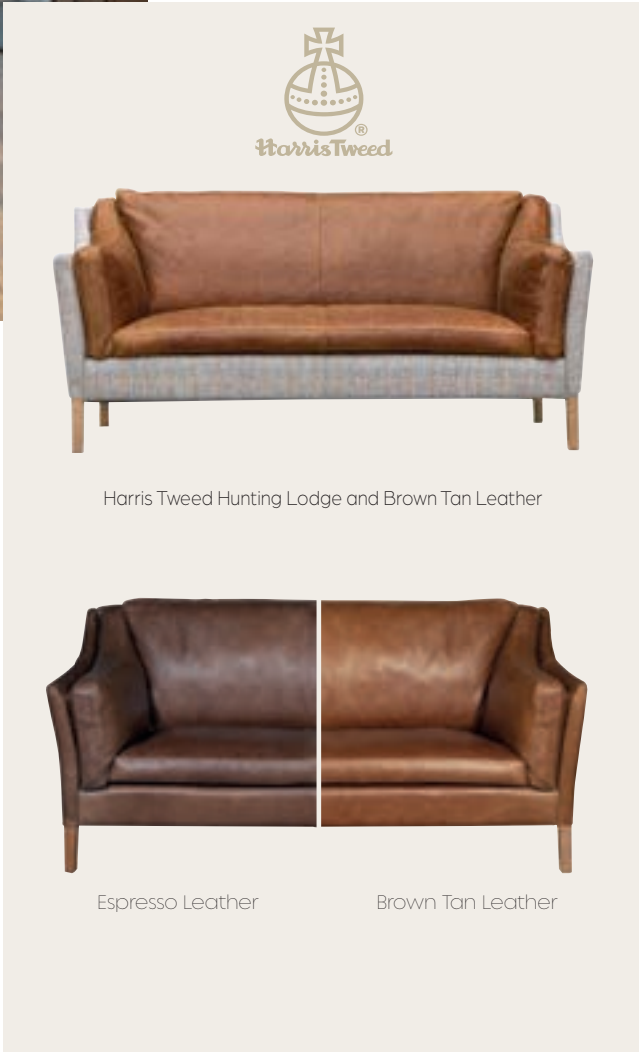


Clyde FT  
XCLYDEEL (Espresso Leather)    w:100 x d:93 x h:100  
XCLYDETANL (Tan Brown Leather)    w:100 x d:93 x h:100

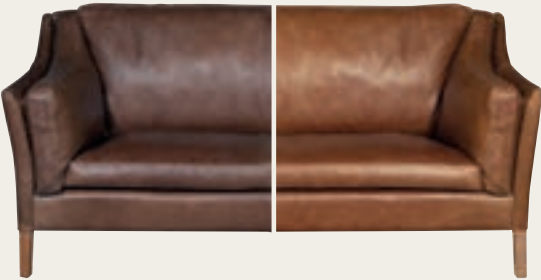


Espresso Leather    Brown Tan Leather

Gotti Club FT  
**2 Seater Sofas**    w:181 x d:98 x h:80  
XGTI3L02\_PL – Brown Tan Leather  
XGTIEL02\_PL – Espresso Leather  
**3 Seater Sofas**    w:220 x d:98 x h:80  
XGTI3L03\_PL – Brown Tan Leather  
XGTIEL03\_PL – Espresso Leather



Harris Tweed Hunting Lodge and Brown Tan Leather



Espresso Leather    Brown Tan Leather

Malone FT  
**Compact 2 Seater**    w:152 x d:84 x h:84  
XML3L02\_PL – Brown Tan Leather  
XMLLEL02\_PL – Espresso Leather  
XMLHTW02\_PL – Harris Tweed Hunting Lodge and Brown Tan Leather  
**Large 2 Seater**    w:182 x d:84 x h:84  
XML3L03\_PL – Brown Tan Leather  
XMLLEL03\_PL – Espresso Leather  
XMLHTW03\_PL – Harris Tweed Hunting Lodge and Brown Tan Leather



Espresso Leather    Brown Tan Leather

Bugsy Sofa FT  
**Compact 2 Seater**    w:152 x d:84 x h:68  
XBGE3L02\_PL – 2 Seater – Brown Tan Leather  
XBGEL02\_PL – 2 Seater – Espresso Leather  
**Large 2 Seater**    w:182 x d:84 x h:68  
XBGE3L03\_PL – 3 Seater – Brown Tan Leather  
XBGEL03\_PL – 3 Seater – Espresso Leather





## 10 reasons to choose wool

**1. Pure wool is 100% natural**, 100% renewable, 100% sustainable, 100% biodegradable, if you love the planet – use more wool!

**2. It is warm** but it is cool too because it adapts to the wearer – that's why sheep are so snug and content!

**3. Wool is flame retardant** and will often self-extinguish. Fire-fighters like it because it produces less smoke and toxic fumes – making it a safer choice for the home.

**4. Strong and long lasting** – wool carpets and rugs can take lots of heavy wear and are known to look better for longer – quality always lasts!

**5. Easy care & stain resistant** – The protective waxy coating on wool fibres makes wool products resistant to staining and they also pick up less dust as wool is naturally anti-static. Innovations in white goods and wool processing mean that wool items are no longer hand-wash only. Many wool products can now be machine-washed and tumble dried.

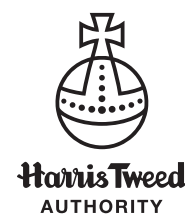
**6. Wool has hypoallergenic and anti-bacterial properties** – it makes the air that we breathe cleaner and better.

**7. UV protection** – As a natural fibre, evolved over millions of years to protect sheep against the elements, wool absorbs UV radiation providing protection from the sun.

**8. Insulate with it**, soundproof with it, wear it, walk on it, wrap things with it. The world's oldest renewable fibre is also the most versatile and modern.

**9. Sheep are amazing** – they graze peacefully, grow wonderful wool, we use it to make beautiful textiles and the whole process begins again... no depletion, just sustainable and sensible.

**10. Wool is smarter than any other fibre** – it travels a long way on its journey from the sheep to finished product but it never loses any of its remarkable qualities and it looks and feels fabulous too.



All of our wool growers respect the 5 animal freedoms & are mulesing\* free

- 1 Freedom from hunger and thirst
- 2 Freedom from discomfort
- 3 Freedom from pain & disease
- 4 Freedom from fear & distress
- 5 Freedom to express normal behaviour

\*Mulesing is a practice in which skin is removed from the rear of the sheep, to prevent flies from laying their larvae on the sheep. This process is carried out without anaesthetic. All our wool is produced **without** mulesing.



